

The White House . . . executive mansion of the United States in Washington, D. C. The timely question, "Who will be its next occupant?" is one of intense interest to all Americans.

In Every Important Phase of Design -a Long, Clean Stride Ahead

In engineering . . . in design . . . in new and worthwhile developments leading to smoother, more thrilling, more certain performance. In all these there can be no question about it. Mechanically the All-American is far ahead of its field.

★ ★ ★

And the same in appearance. Impressive . . . arresting . . . smart. From the high, narrow radiator . . . to the graceful curve of the roof line in the rear.

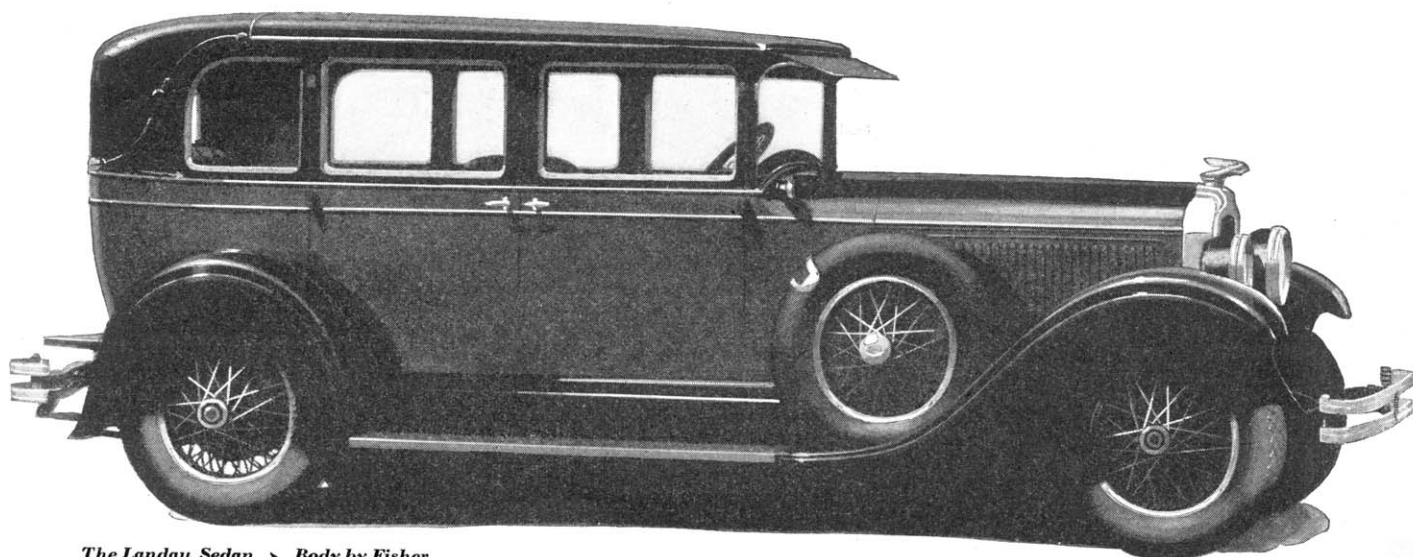
A rakish sweep of fenders . . . an engaging trimness of hood and cowl. The mastery of Fisher craftsmanship in long, low bodies . . . the lustrous sheen of Duco colors.

★ ★ ★

And then with the addition of sport equipment . . . six wire wheels . . . spares cradled forward along the hood . . . the All-American takes on custom-built distinction . . . an air of being quite out of the ordinary . . . of belonging to someone who knows.

2-Door Sedan, \$1045; Landau Coupe, \$1045; Sport Roadster, \$1075; Phaeton, \$1075; 4-Door Sedan, \$1145; Cabriolet, \$1155; Landau Sedan, \$1265. (Wire wheels, trunk rack and spare tire extra). New Series Pontiac Six, \$745 to \$875. All prices at factory. Delivered prices include minimum handling charges. Easy to pay on the General Motors Time Payment Plan.

OAKLAND MOTOR CAR COMPANY, PONTIAC, MICHIGAN



The Landau Sedan ▸ Body by Fisher

OAKLAND

ALL-AMERICAN SIX

PRODUCT OF GENERAL MOTORS