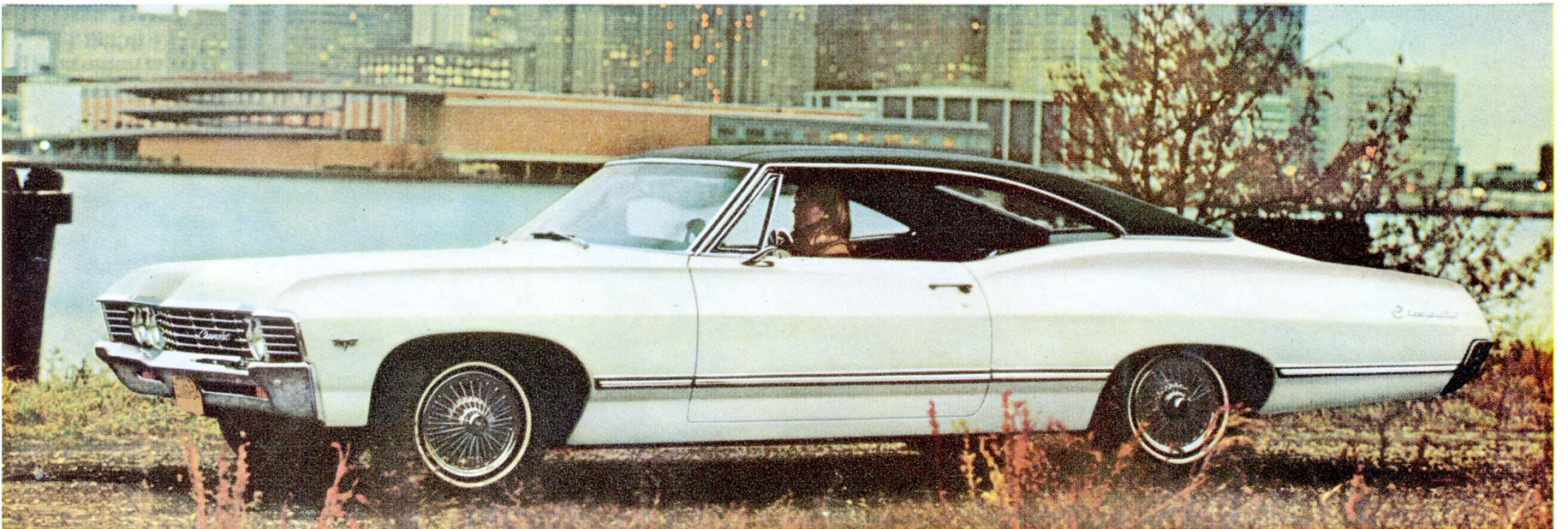


stops smoother, turns easier, rides steadier, and is it ever quiet

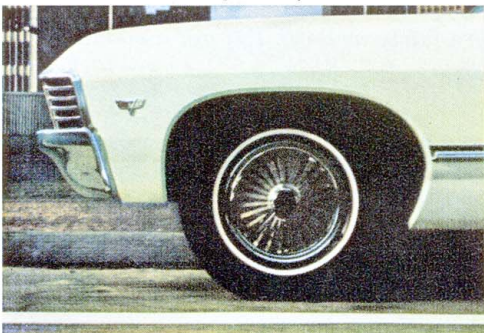
New requirements in design help make '67 Chevrolets stop smoother. That's because the front wheels are now less apt to "toe out" and make the tires scrub. Something else: the car is easier to turn, and easier to hold on curves. And

for dessert: those annoying little road noises and jiggles are practically extinct in the new Chevrolet, due mainly to refinements in the rear suspension and a new way of cushioning the body. You'll feel the difference. For sure.

Impala Sport Coupe



Less nose dive when you stop



Improved suspension smooths bumps



Steers up to 10% easier



Look for this Mark of Excellence



'67 Chevrolet gives you that sure feeling

