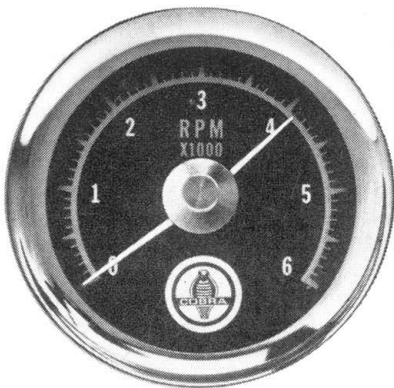
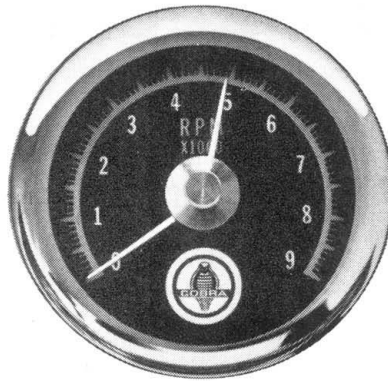


Whatever your engine...we've got a Ford tach for it

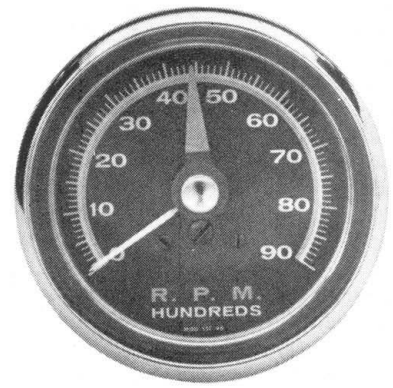
You name it . . . from Ford's 170-cu. in. Six to the new 7-litre V-8, and everything between . . . your Ford Dealer has a tachometer to fit. All are illuminated for night use. All have adjustable red line. All have 250° dial for easier, more accurate reading.



Cobra 6000 RPM 4-INCH FACE
Fits 6- and 8-cylinder engines, 6- or 12-volt systems. Recommended for standard street engines. Tach head mounts in instrument panel, contains complete unit. Case and bracket are included for external mounting. Hooks up to ignition inside passenger compartment.



Cobra 9000 RPM 4-INCH FACE
Ideal for all 8-cylinder engines, 6- or 12-volt systems. For high RPM requirements. Tach head mounts in instrument panel, contains complete unit. (For external mounting, case and bracket are included.) Hooks up to ignition inside passenger compartment.



SUN 9000 RPM 4-INCH FACE. For use in high performance 8-cylinder cars with 12-volt systems. Tach head mounts in instrument panel. Can be mounted externally by the addition of case and bracket. Completely insulated, sealed against dust and moisture.

PRODUCTS OF
Ford

See your local Ford Dealer