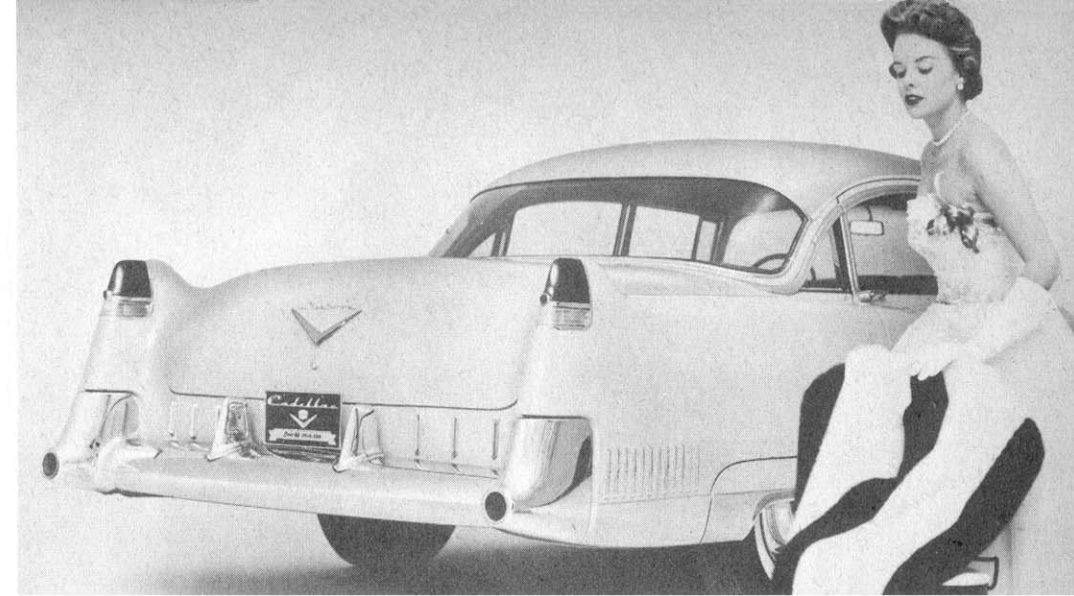


Adding new grace to the rear of the 1955 Series 60 Special Fleetwood Sedan is the curve treatment of the back window pillar. The vertical mounted chrome trim molding is also a distinguishing new feature.



The 1955 Eldorado is a special sports-type production convertible, styled to meet the growing demand for a 'different' car. The Eldorado boasts a 270-horsepower V-8 engine and a wheelbase of 129 inches.

Auto  
Review

# The 1955 Cadillac

**A**DVANCED styling and major engineering refinements are featured in the 1955 Cadillacs. With Cadillac quality taken for granted, GM engineers and designers have kept pace with modern automotive development and taste by a sleek overall appearance and by offering a wide variety of color combinations.

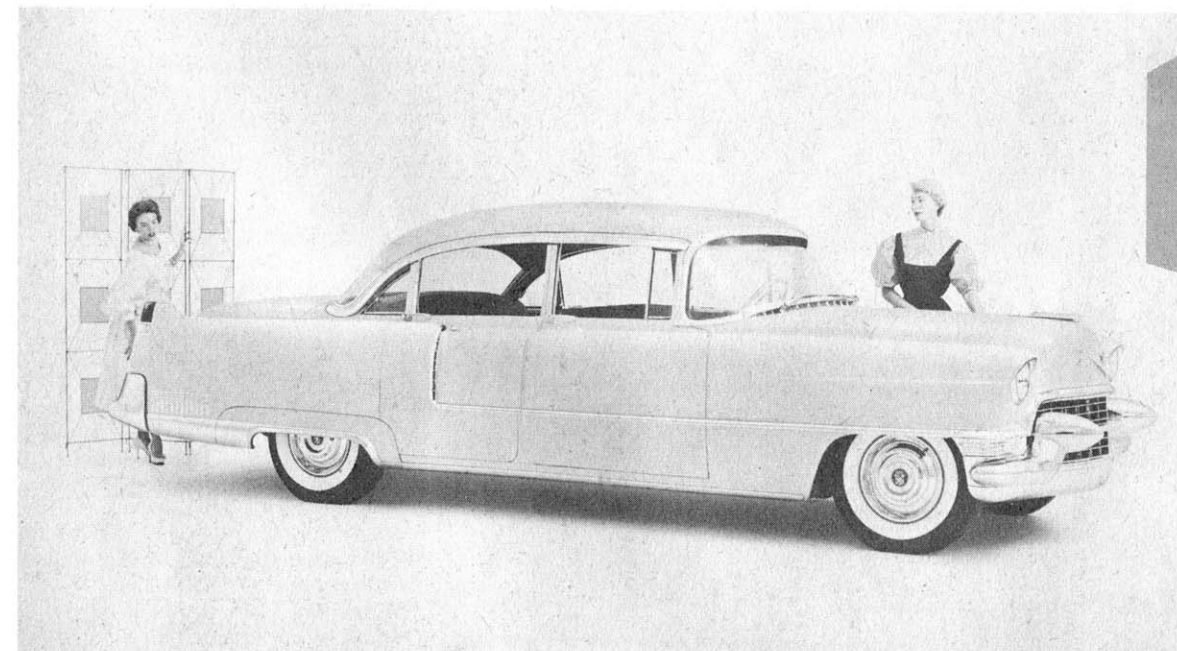
This fine car is immediately identified by a distinctive front end, blending a finely etched cellular grille design with strength through the massive line of bumper, grille guards and rounded lowness of hood.

With the compression ratio increased to 9:1, the 1955 V-8 engine is rated at 250 horsepower at 4,600 rpms. This is the power plant for all standard models except the Eldorado convertible, a special sports type model which is powered by a 270 hp. V-8 engine. The Eldorado engine has dual, four-barrel carburetors, with new air cleaners, intake manifold and throttle controls.

The 250-hp. power plant also introduces a newly designed carburetor to insure engine smoothness while idling. Other new features are a redesigned, more rigid crankshaft; narrower connecting rod bearings made possible through the use of improved bearing material, and a new water pump which increases water circulation at lower speed by 20 per cent, thus providing more even engine operating temperature.

The distinctive front end was inspired by the success of Cadillac's Park Avenue experimental sedan which was displayed at General Motors' Motorama.

Auto  
Review



Conservative luxury is stressed in the Cadillac Series 60 Special Fleetwood Sedan. The center door pillars have been reduced by more than half, giving a wider range of vision with no loss of structural support.