

You're
in Clover
when
Dynaflow
takes over!

IT'S SOMETHING, really, you must sample for yourself.

Just set a lever — step on the accelerator — and a wholly new driving sensation is yours.

IN ONE SWIFT, UNBROKEN FLOW of growing power you move off and into the settled easy stride of full-pace highway travel.

Where others break stride to shift, you swing smoothly by.

Where some "automatic" transmissions call for a lift of the foot to let gears change, you flow steadily and smoothly forward in one unbroken sweep.

STOP SIGNS? Simply brake to a stop — then away again just by treadle pressure.

Hills? You take them in stride, with no thought of shifting — and no jar or jerk as automatic mechanisms shift gears for you.

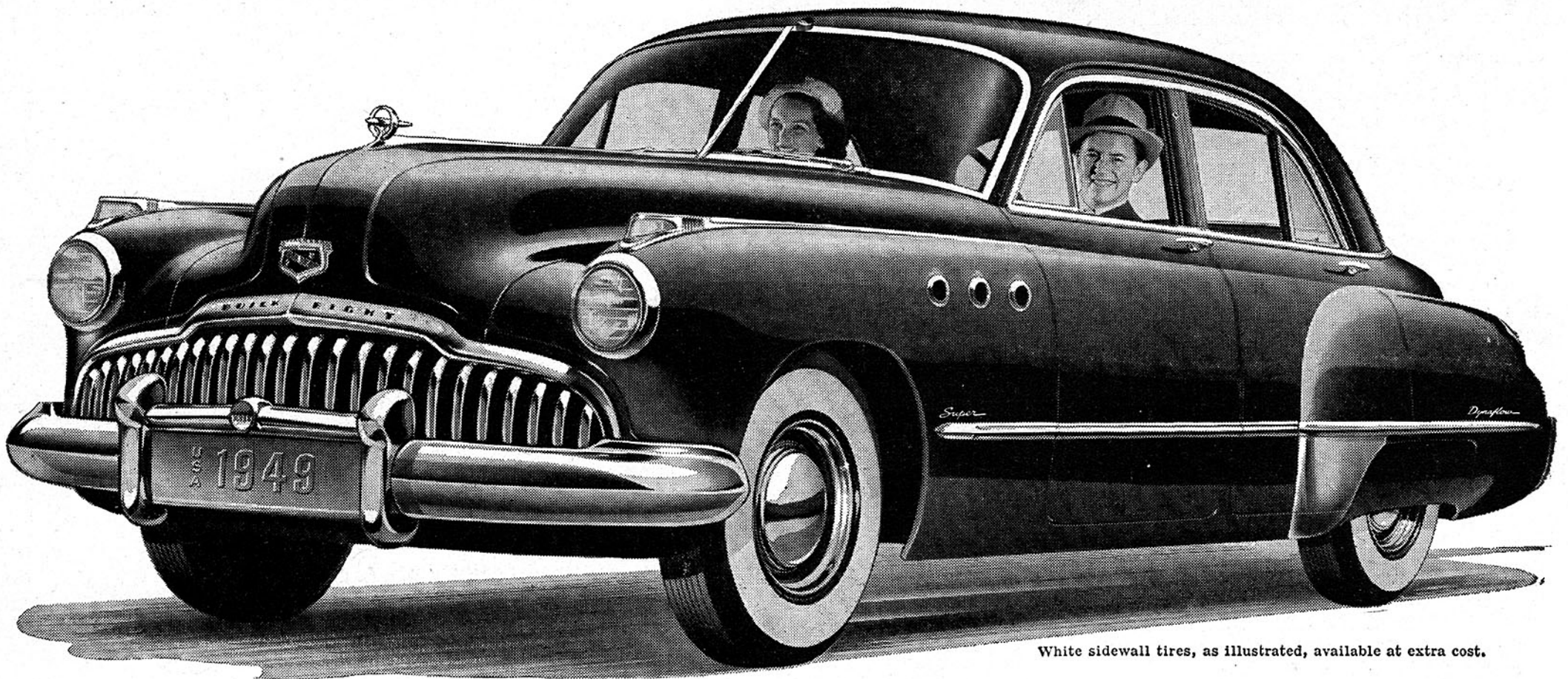
In traffic you have no thought but watching for openings, taking them with a power surge from your nudge on the treadle.

Happy as a bee in clover, you just sit there, steer, and go fast or slow at the touch of a toe!

SMALL WONDER this is called the greatest thing in cars since the self-starter. Small wonder that Buick, seizing the first opportunity to put this new drive in reach of more people, has made it available as optional equipment on all 1949 SUPERS.

A lot of your neighbors are going to be quick to go for the idea of the SUPER plus Dynaflow. Better see *your* Buick dealer pronto — and get your order in, whether or not you have a car to trade.

Tune in HENRY J. TAYLOR, ABC Network, every Monday evening.



White sidewall tires, as illustrated, available at extra cost.

MORE CLEARLY THAN EVER -
"Buick's the Buy!"

**When better automobiles are built
 BUICK will build them**

BUICK alone has all these features: *Silk-smooth DYNAFLOW DRIVE**
FULL-VIEW VISION from enlarged glass area • **SWING-EASY DOORS** and easy access
"LIVING SPACE" INTERIORS with Deep-Cradle cushions • **DUREX BEARINGS**, main and
 connecting rods • **Cruiser-Line VENTIPOINTS** • **Low-pressure tires on SAFETY-RIDE RIMS**
 Lively **FIREBALL STRAIGHT-EIGHT POWER** with **SELF-SETTING VALVE LIFTERS** plus
HI-POISED ENGINE MOUNTINGS • **Buoyant-riding QUADRIFLEX COIL SPRINGING**

BODY BY FISHER

*Standard on ROADMASTER, optional at extra cost on SUPER models.

SEE YOUR NEAREST BUICK DEALER