



## The Feel of Flight

WHEN the new 1942 Lincoln-Zephyr heads into the wind and skims down the highway, you're going to think you're *gliding* rather than *riding*! Cradled near the center of balance on longer, slow-motion springs, you relax in soft, chair-high seats and revel in this smooth, quiet, thrilling feel of flight!

THERE'S no other ride quite like it, because the Lincoln-Zephyr is built on an entirely different principle. A core-to-cowl style of streamlining

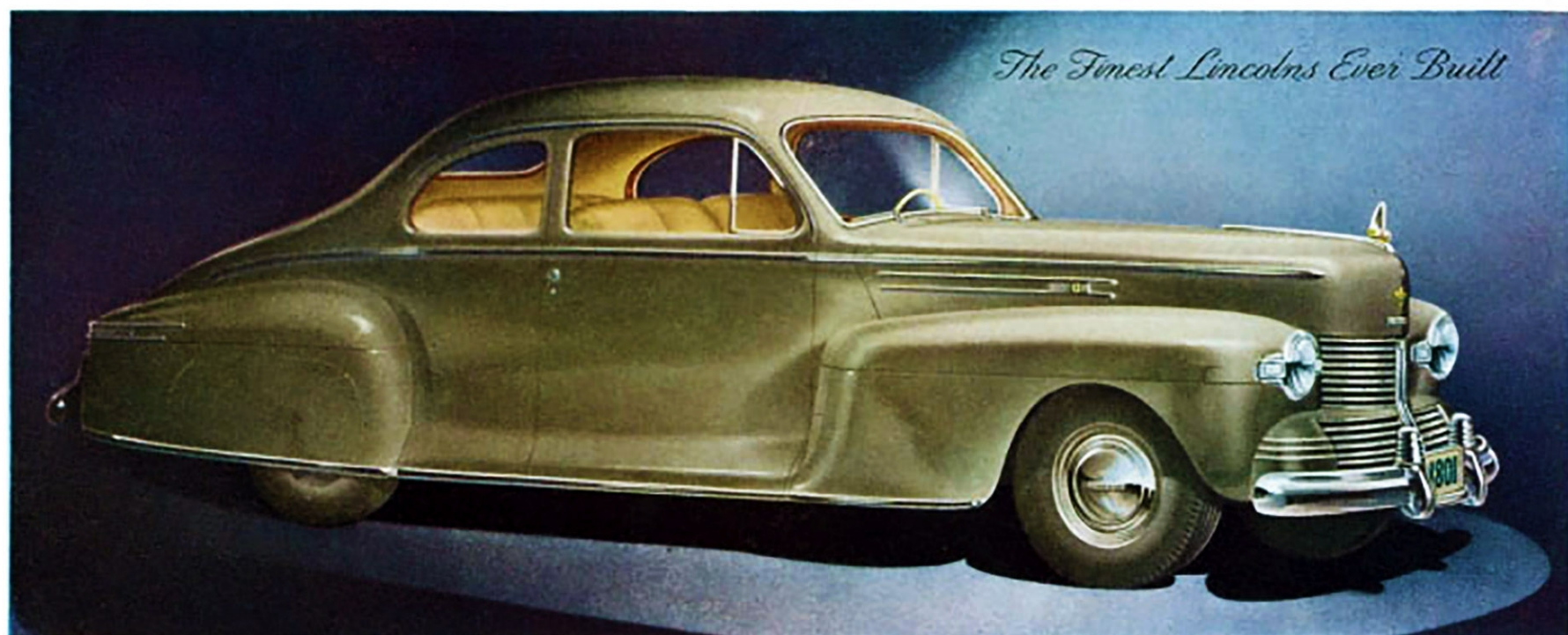
eliminates excess weight . . . produces longer, lower, sleeker lines. Lincoln's exclusive V-type 12-cylinder engine—now more powerful than ever—gives brilliant new responsiveness at all speeds, with remarkable economy.

INTERIORS have the rich, spacious look you expect from Lincoln craftsmanship, with big, deep windows for greater vision. And new Lincoln Liqueumatic Drive\* with automatic gearshift enables you to drive all day without shifting gears.

THIS is a good year to buy a better car. And in every detail of manufacture, the 1942 Lincoln-Zephyr is the *finest* ever to bear the name. Built to traditional Lincoln standards . . . of even better and costlier materials . . . it's a car that will give you more pride per day, more comfort per mile, more fun per gallon!

LINCOLN MOTOR CAR DIVISION, FORD MOTOR COMPANY  
 Builders of the Lincoln-Zephyr V-12, Sedan, Coupe, Club Coupe and Convertible Coupe; the Lincoln-Continental, Cabriolet and Coupe; the Lincoln-Custom, Sedan and Limousine.

\*Optional at moderate cost.



The Finest Lincolns Ever Built

Lincoln  Zephyr V-12